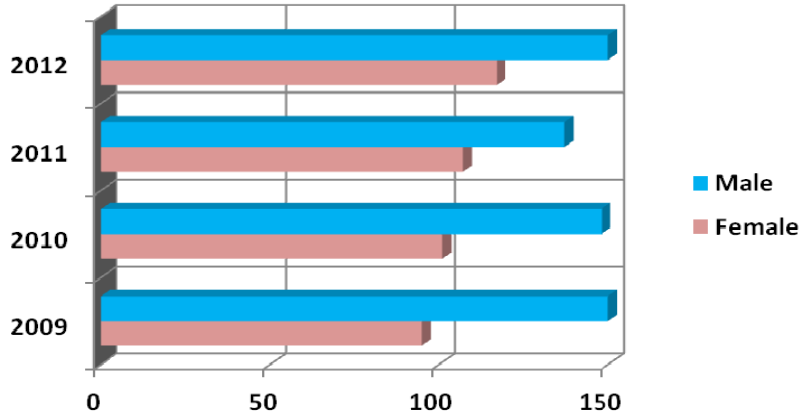


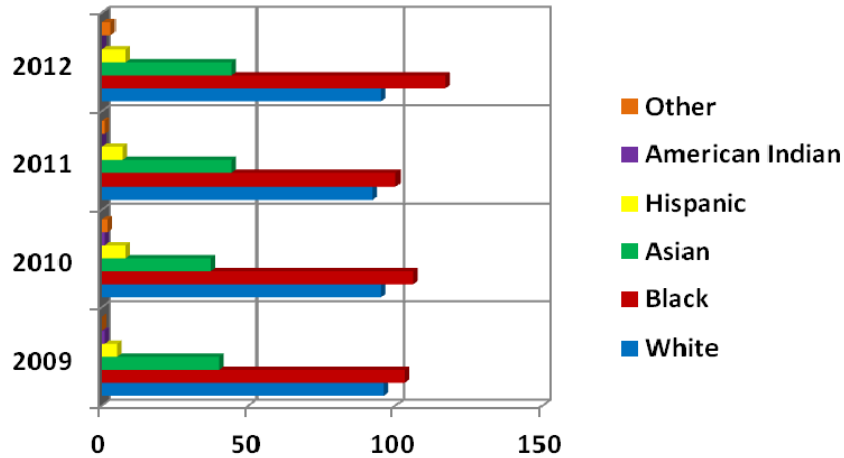
## Fall 2009-2012 CUPA HR Faculty Full-time By Gender

---



Gender	2009	2010	2011	2012
Female	95	101	107	117
Male	150	148	137	150
Total	245	249	244	267

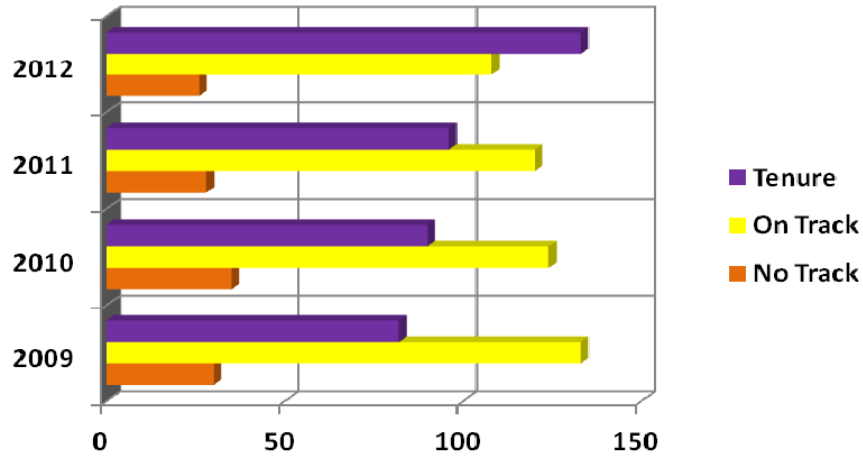
## By Race



Race	2009	2010	2011	2012
White	96	95	92	95
Black	103	106	100	117
Asian	40	37	44	44
Hispanic	5	8	7	8
American Indian	1	1	0	0
Other	0	2	1	3
Total	245	249	244	267

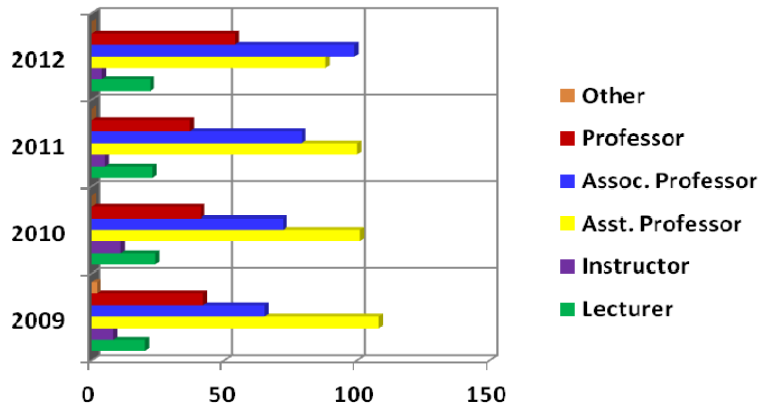
## Fall 2009-2012 CUPA HR Faculty Full-time By Tenure Status

---



Status	2009	2010	2011	2012
No Track	30	35	28	26
On Track	133	124	120	108
Tenure	82	90	96	133
<b>Total</b>	<b>245</b>	<b>249</b>	<b>244</b>	<b>267</b>

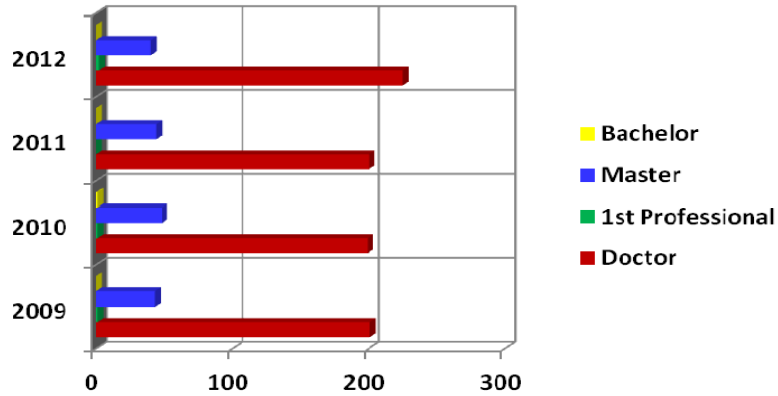
## By Position



Position	2009	2010	2011	2012
Lecturer	20	24	23	22
Instructor	8	11	5	4
Asst. Professor	108	101	100	88
Assoc. Professor	65	72	79	99
Professor	42	41	37	54
Other	2	0	0	0
<b>Total</b>	<b>245</b>	<b>249</b>	<b>244</b>	<b>267</b>

## Fall 2009-2012 CUPA HR Faculty Full-time By Degree

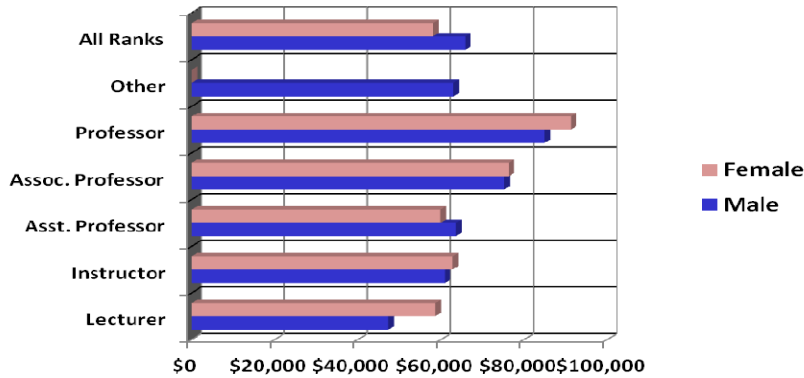
---



Degree	2009	2010	2011	2012
Doctor	201	199	200	225
1 <sup>st</sup> Professional	1	1	0	2
Master	43	48	44	40
Bachelor	0	1	0	0
<b>Total</b>	<b>245</b>	<b>249</b>	<b>244</b>	<b>267</b>

## By Fall 2009 CUPA HR Faculty Full-time By Average Salary

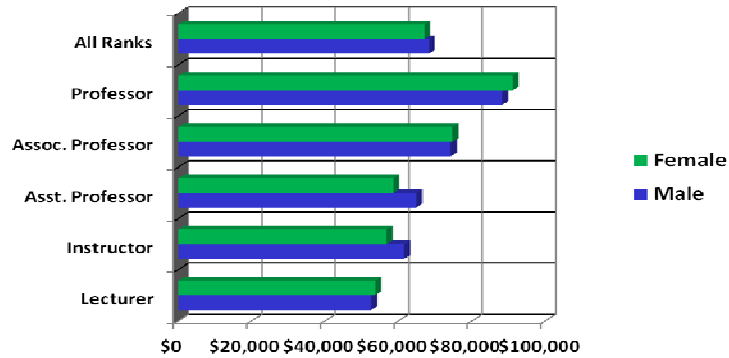
---



Salary	Male	Female
Lecturer	\$47,434	\$58,686
Instructor	\$60,954	\$62,907
Asst. Professor	\$63,651	\$59,858
Assoc. Professor	\$75,211	\$76,315
Professor	\$84,918	\$91,288
Other	\$63,060	\$0
<b>All Ranks</b>	<b>\$65,871</b>	<b>\$58,176</b>

## Fall 2010 CUPA HR Faculty Full-time By Average Salary

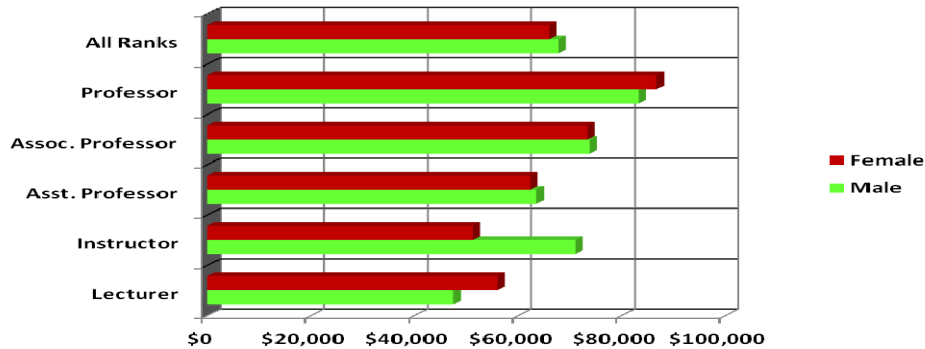
---



Salary	Male	Female
Lecturer	\$52,627	\$53,678
Instructor	\$61,618	\$56,815
Asst. Professor	\$64,900	\$58,599
Assoc. Professor	\$74,263	\$74,731
Professor	\$88,271	\$91,191
All Ranks	\$68,336	\$67,003

## By Fall 2011 CUPA HR Faculty Full-time By Average Salary

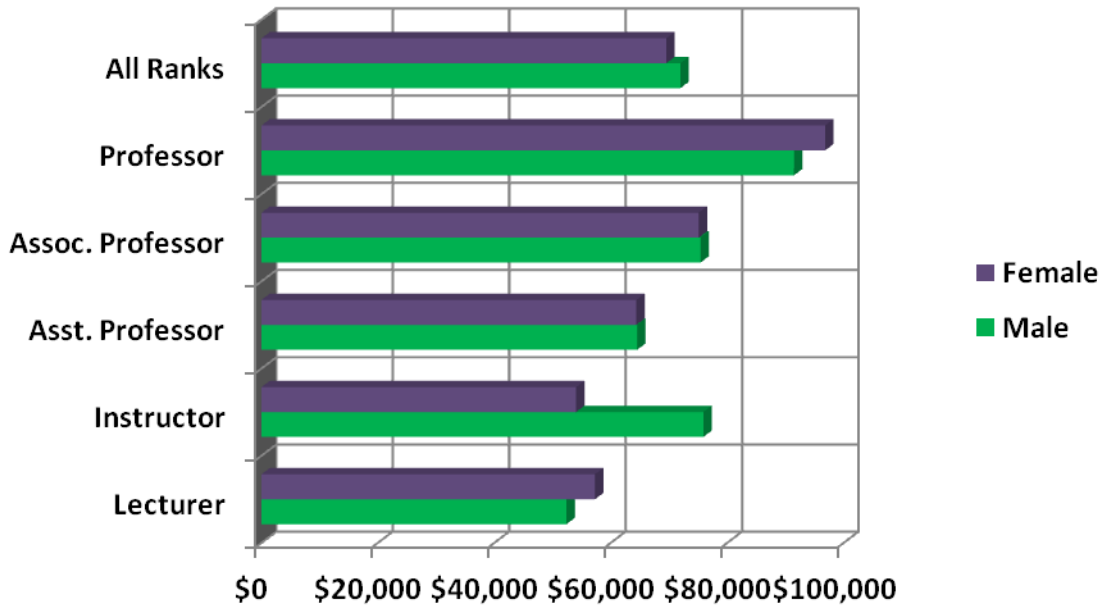
---



Salary	Male	Female
Lecturer	\$47,493	\$56,032
Instructor	\$71,000	\$51,297
Asst. Professor	\$63,511	\$62,366
Assoc. Professor	\$73,852	\$73,404
Professor	\$83,260	\$86,730
All Ranks	\$67,823	\$65,966

## Fall 2012 CUPA HR Faculty Full-time By Average Salary

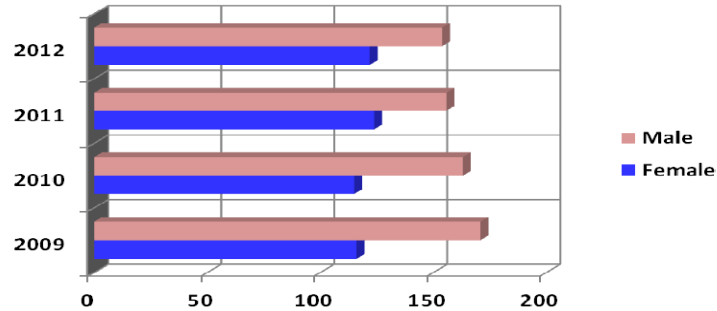
---



Salary	Male	Female
Lecturer	\$52,388	\$57,291
Instructor	\$75,900	\$54,038
Asst. Professor	\$64,526	\$64,382
Assoc. Professor	\$75,404	\$75,097
Professor	\$91,458	\$96,797
All Ranks	\$71,936	\$69,521

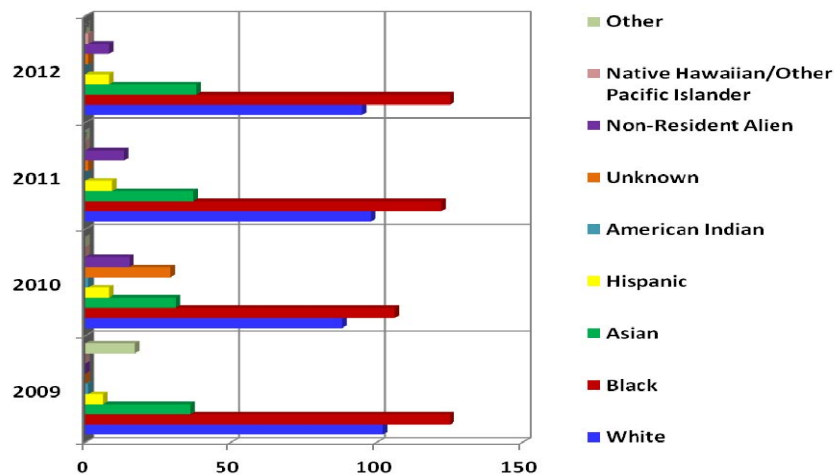
## Fall 2009-2012 AAUP Faculty Full-time By Gender

---



Gender	2009	2010	2011	2012
Female	116	115	124	122
Male	171	163	156	154
<b>Total</b>	<b>287</b>	<b>278</b>	<b>280</b>	<b>276</b>

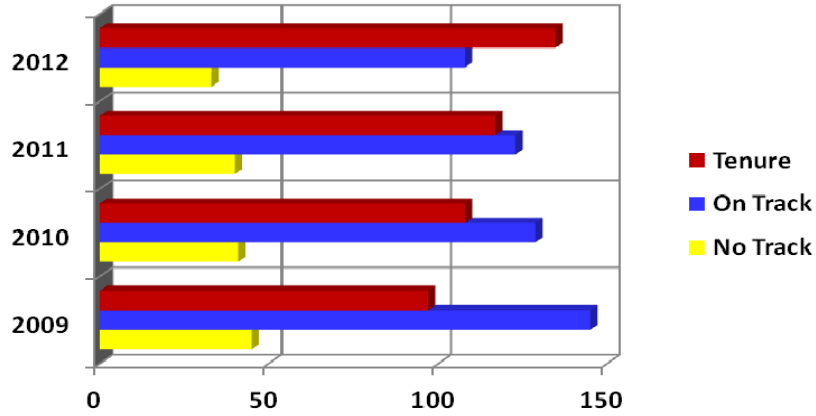
## By Race



Race	2009	2010	2011	2012
White	102	88	98	95
Black	125	106	122	125
Asian	36	31	37	38
Hispanic	6	8	9	8
American Indian	1	1	0	0
Unknown	0	29	1	1
Non-Resident Alien	0	15	13	8
Native Hawaiian/Other Pacific Islander	0	0	0	1
Other	17	0	0	0
<b>Total</b>	<b>287</b>	<b>278</b>	<b>280</b>	<b>276</b>

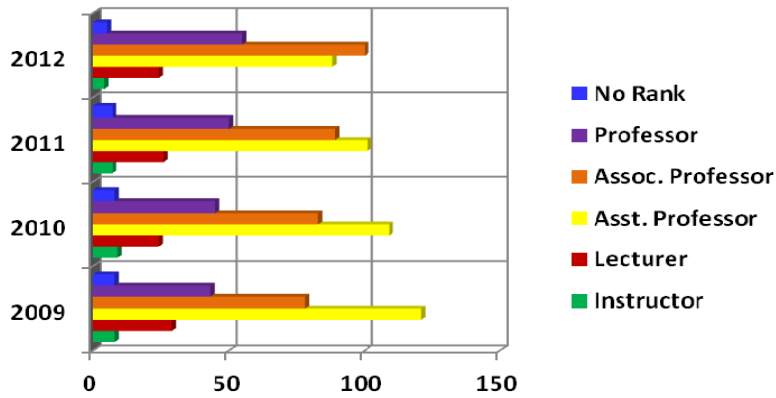
## Fall 2009-2012 AAUP Faculty Full-time By Tenure Status

---



Status	2009	2010	2011	2012
No Track	45	41	40	33
On Track	145	129	123	108
Tenure	97	108	117	135
<b>Total</b>	<b>287</b>	<b>278</b>	<b>280</b>	<b>276</b>

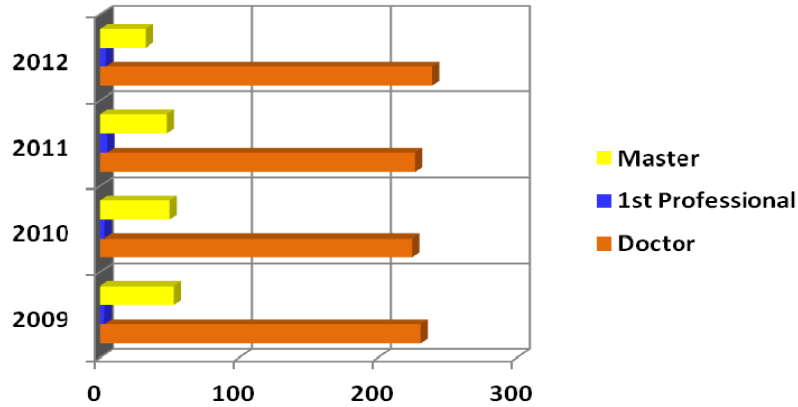
## By Position



Position	2009	2010	2011	2012
Instructor	8	9	7	4
Lecturer	29	24	26	24
Asst. Professor	121	109	101	88
Assoc. Professor	78	83	89	100
Professor	43	45	50	55
No Rank	8	8	7	5
<b>Total</b>	<b>287</b>	<b>278</b>	<b>280</b>	<b>276</b>

## Fall 2009-2012 AAUP Faculty Full-time By Degree

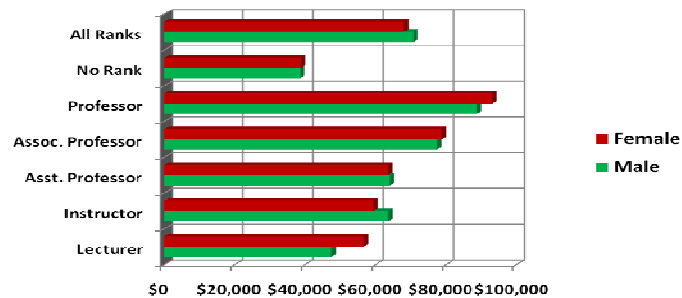
---



Degree	2009	2010	2011	2012
Doctor	231	225	227	239
1 <sup>st</sup> Professional	3	3	5	4
Master	53	50	48	33
<b>Total</b>	<b>287</b>	<b>278</b>	<b>280</b>	<b>276</b>

## By Fall 2009 AAUP Faculty Full-time By Average Salary

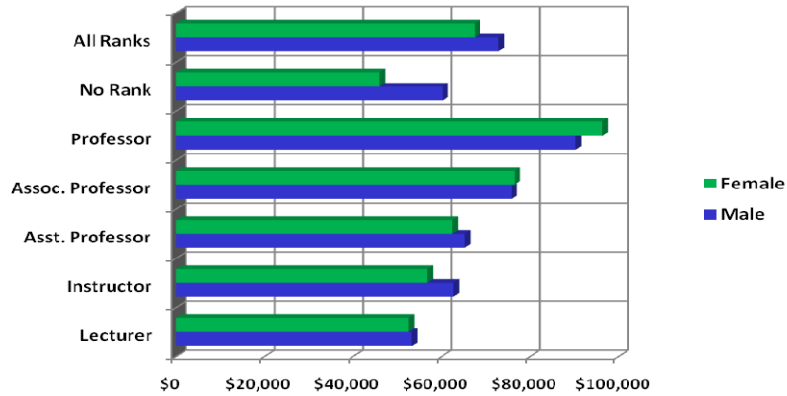
---



Salary	Male	Female
Lecturer	\$47,424	\$56,715
Instructor	\$63,593	\$59,304
Asst. Professor	\$64,045	\$63,560
Assoc. Professor	\$77,516	\$78,735
Professor	\$88,749	\$93,184
No Rank	\$38,652	\$38,888
<b>All Ranks</b>	<b>\$70,728</b>	<b>\$68,132</b>

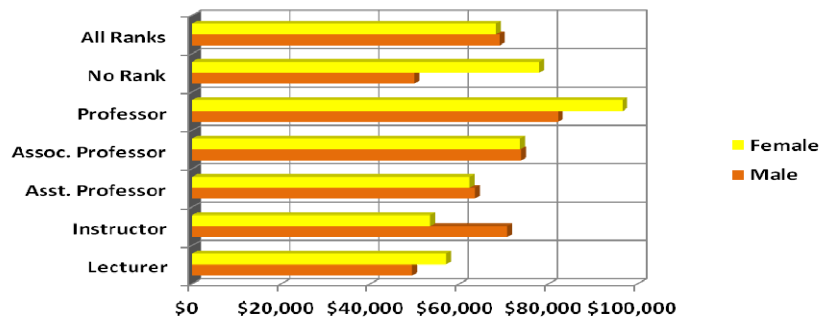


## Fall 2010 AAUP Faculty Full-time By Average Salary



Salary	Male	Female
Lecturer	\$53,275	\$52,599
Instructor	\$62,684	\$56,815
Asst. Professor	\$65,282	\$62,411
Assoc. Professor	\$75,808	\$76,519
Professor	\$90,354	\$96,251
No Rank	\$60,172	\$45,951
All Ranks	\$72,944	\$67,510

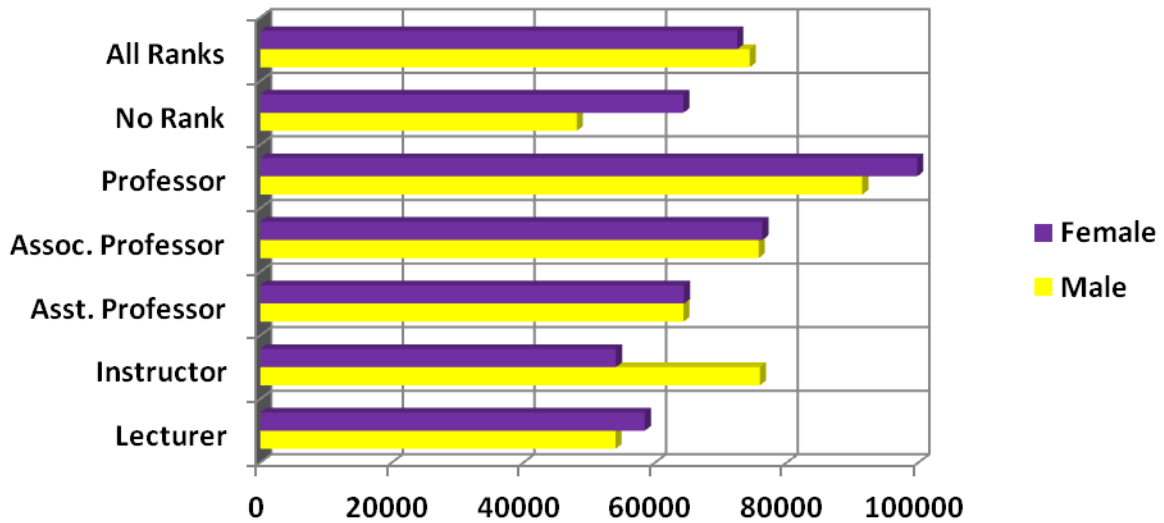
## By Fall 2011 AAUP Faculty Full-time By Average Salary



Salary	Male	Female
Lecturer	\$49,388	\$57,107
Instructor	\$70,667	\$53,473
Asst. Professor	\$63,511	\$62,366
Assoc. Professor	\$73,852	\$73,638
Professor	\$82,125	\$96,593
No Rank	\$49,880	\$77,951
All Ranks	\$69,054	\$68,228

## Fall 2012 AAUP Faculty Full-time By Average Salary

---



Salary	Male	Female
Lecturer	\$53,978	\$58,420
Instructor	\$75,900	\$54,038
Asst. Professor	\$64,287	\$64,382
Assoc. Professor	\$75,716	\$76,276
Professor	\$91,458	\$99,796
No Rank	\$48,070	\$64,278
All Ranks	\$74,344	\$72,467